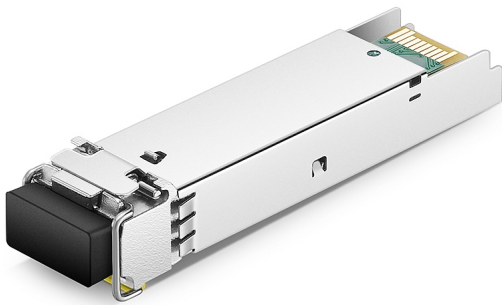


МРЕЖОВА ТЕХНИКА > Модули

Cisco 1000BASE-EX SFP transceiver module, SMF, 1310nm, DOM



Модел : GLC-EX-SMD=

Cisco 1000BASE-EX SFP transceiver module, SMF, 1310nm, DOM

X-ка 1: The 1000BASE-EX SFP operates on standard single-mode fiber-optic link spans of up to 40km. A 5dB inline optical attenuator should be inserted between the fiber-optic cable and the receiving port on the SFP at each end of the link for back-to-back connect

X-ка 2: 1000BASE-EX long-wavelength; with DOM

X-ка 3: Fiber Type: SMF

X-ка 4: 1310 nm Optical Wave Length

X-ка 5: Dual LC/PC connector

X-ка 6: Max. Data Rate 1000Mbps

Цена : 1871.69 EUR с ДДС

Наличност: Този продукт е бил добавен в нашия каталог на Вт 28 април, 2026